

greenEvolution

# flex / flex A

Timeless classic design  
with unparalleled engineering features.



Versatile profile for renovations  
and new builds

---

Unique combination of light  
input, insulation, safety, and  
sound proofing

---

Available with RAL A wall thickness  
for maximum stability

---



# Windows are always individual and a value driver

Windows make up just a small percentage of the construction costs yet have a major impact on the home:

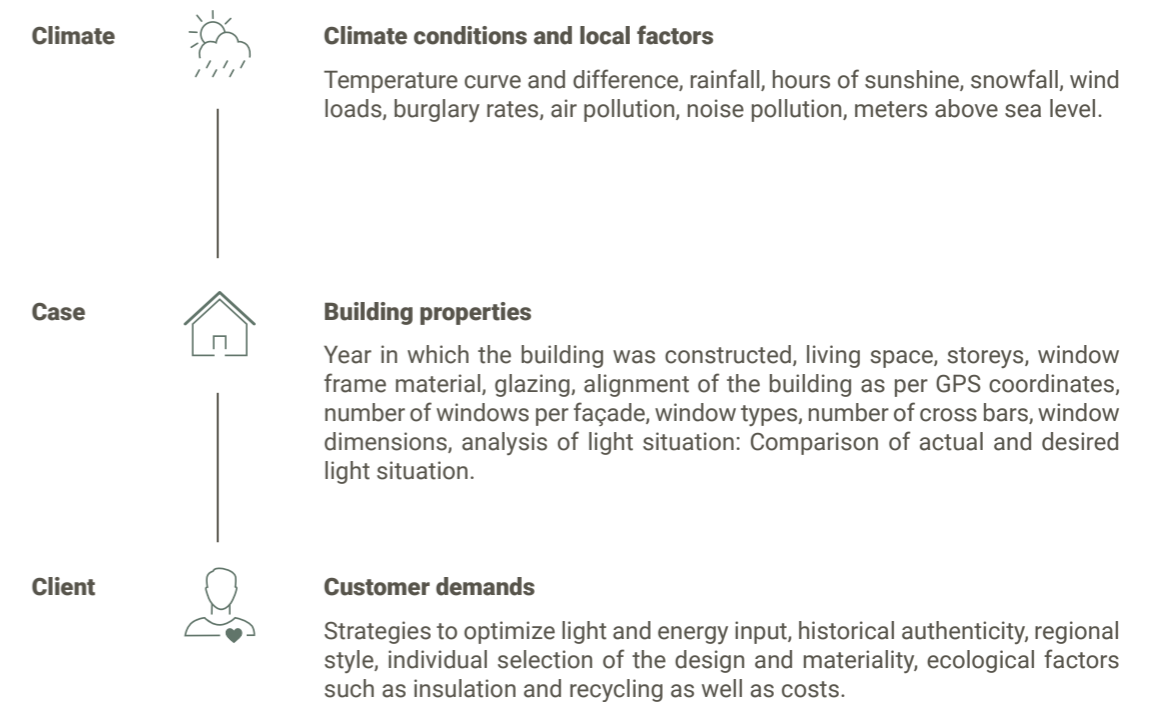
- Windows which match the style of the building give the home a face and increase the value of the property.
- Daylight enhances the ambiance in the home and has a positive effect on physical and mental well-being.
- The energy input of well-insulated windows has the same effect as a heating system.
- Between 25 and 50 % of heating costs and the associated CO<sub>2</sub> pollution can be reduced thanks to modern windows.
- Windows ensure optimized control of the indoor climate.
- The right windows can slash the risk of burglary by 80 %.
- Noise pollution from the outside can be reduced by up to 75 % in urban regions with suitable windows.

The site, building and residents are all unique. Therefore, there is no such thing as a perfect standard window solution to suit all demands. Price as the sole decision-making criterion does not go far enough. Windows must be configured to the specific requirements in order to become "myWindows".



## The Salamander C3 principle: The route to optimum window configuration

You can use our specially developed procedure to find the window that meets your standards. These three dimensions essentially determine whether your choice of window matches the building and external influences:



## Climate

As a versatile profile, flex offers an optimum combination of light input, structural design, noise protection, and safety.

The heat transfer coefficient of up to 1.0 W/(m<sup>2</sup>K), makes flex and flex A extremely energy efficient.

Therefore, flex is ideally suited for places where winters are cold. In these cool locations with few hours of sunshine, heating energy can be conserved.

## Case

### Architectural style/window type

Given its well-balanced properties, flex is ideal for all standard applications from renovations to new builds and suits architectural styles from the 1950s to the present day.

### Light

The large-area window units that can be created with flex and flex A allow optimal light entry.

### Structural analysis

The flexible structural concept permits the safe use in large-area, modern window units – standard window sizes of up to 2.60 m and windows from floor to ceiling can be implemented.

**The timeless appearance and high stability of flex A make it suitable for large window solutions with high structural requirements and strong wind conditions.**

### Orientation

Due to optimized insulation values, flex and flex A can significantly improve the energy balance on the north side of a building. On the building's south side, the structural design facilitates large floor-to-ceiling elements and thus optimizes the input of light and energy.

## Client

### Strategies

The styles of flex and flex A can be combined with the system free, which is optimized for aesthetic authenticity and natural light. This means that within a building—depending on the compass direction or window type—the optimal window configuration of authenticity, light input, insulation and structural analysis is ensured.

### Sound protection

With a glass thickness of up to 48 mm, sound-proofing of up to 47 dB can be achieved.

### Burglar resistant

With flex and flex A burglary protection of up to RC3 can be ensured via standard measures.

### Surfaces

Salamander White, alternatively the basic body is also available in anthracite, cream, brown, and caramel, more than 40 standard film decors are available, aluminum cover.

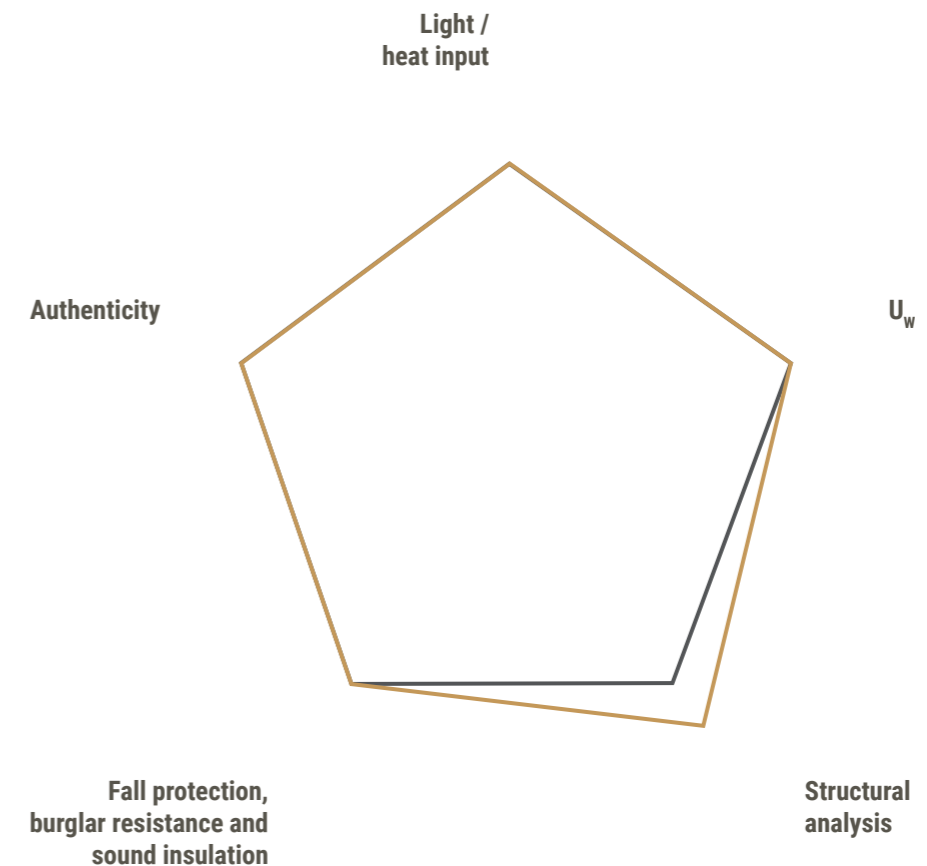
### Additional surfaces for flex A

Greta™, realMaterial.

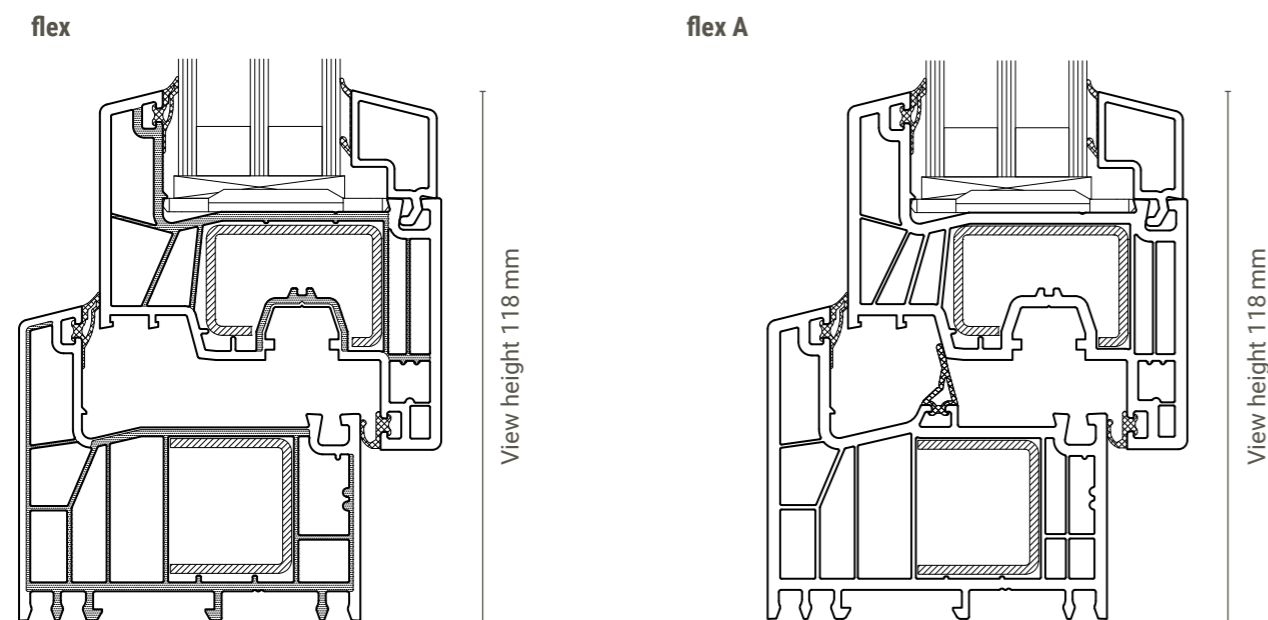
# flex combines classic design with an unparalleled engineering features



Compared to our all-rounder:



# The most important values at a glance



Illustrations not to scale

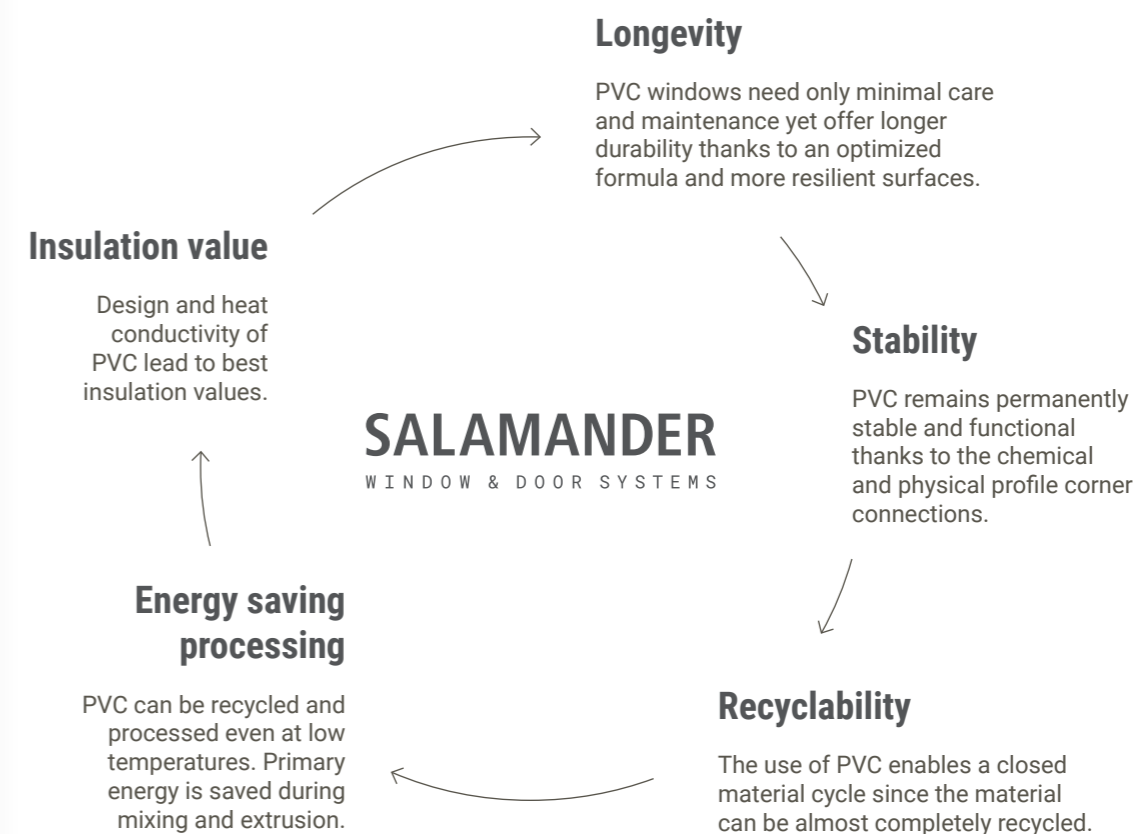
<b>Thermal insulation</b>	AD $U_w$ up to 0.77 W/(m <sup>2</sup> K) MD $U_w$ up to 0.73 W/(m <sup>2</sup> K)	AD $U_f$ up to 1.1 W/(m <sup>2</sup> K) MD $U_f$ up to 1.0 W/(m <sup>2</sup> K)
<b>Sound proof</b>	47 dB	
<b>Safety</b>	up to RC3	
<b>Construction depth</b>	76 mm	
<b>Sash view height</b>	48 mm	
<b>Frame view height</b>	70 mm	
<b>Maximum sash sizes</b>	Standard sash: Width up to max. 1,500 mm Height up to max. 2,600 mm	Side entrance door sash: Width up to max. 1,000 mm Height up to max. 2,200 mm  Entrance door sash: Width up to max. 1,200 mm Height up to max. 2,400 mm
<b>Types of opening</b>	Side-hung window, bottom hung window, and tilt and turn window, bi-fold door or parallel slide & tilt door, entrance door flex: Also available as side entrance door	

Subject to changes, errors, printing and type setting mistakes.

# The ideal, most sustainable window material – PVC

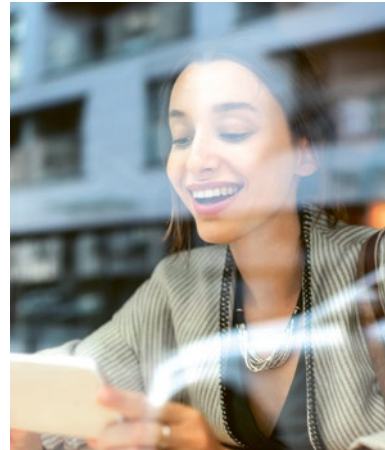
We specialize in the production of window profiles using the sustainable and long-lasting material PVC and combine this with our innovative realMaterial surfaces. This enables us to create customized windows which not only suit the style of the building, but also bring it to life – on the outside and inside.

Our production facilities are powered by an ever increasing percentage of green electricity from renewable sources and our own water power plant.



# SALAMANDER

WINDOW & DOOR SYSTEMS



## We have the perfect window to suit your needs –

thanks to our decades of experience in profile development and PVC extrusion. Long-lasting, customizable and sustainable from the word go: We are continuously developing our systems to offer you the perfect window for the future today.

**Salamander Industrie-Produkte GmbH**



Greta Windows LLC  
32 Overlook Drive Ridgefield,  
CT 06877, USA  
Tom: (917)-385-3856  
Matt: (203)-788-8415  
[www.gretawindows.com](http://www.gretawindows.com)